



msg.Migration System

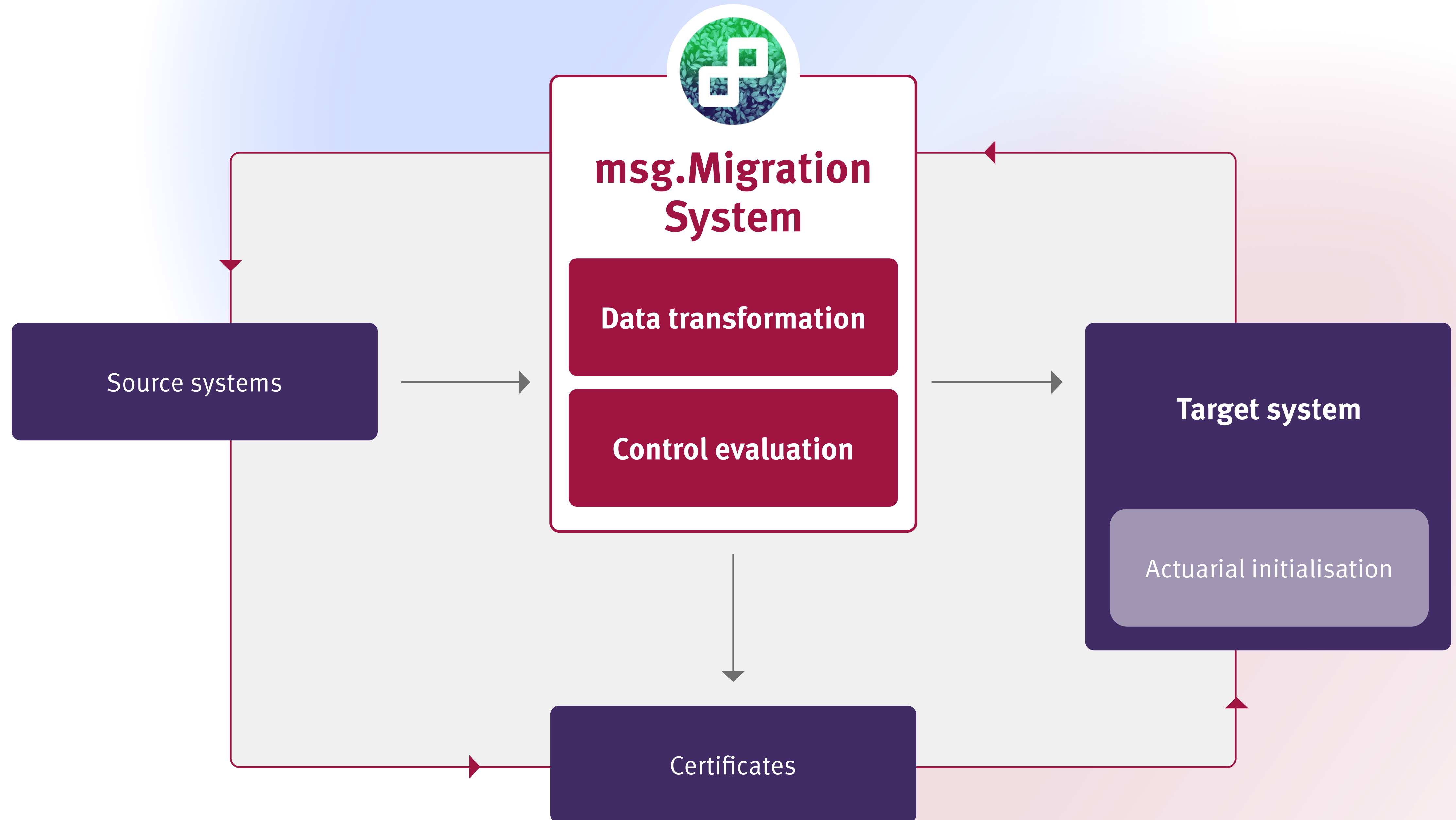
Migration of data from any source
system to any target system



Migration of data from any source system to any target system

The insurance industry is going through a phase of disruption. Be it mergers, acquisitions or the introduction of new technology, vast amounts of data and automated business processes always have to be migrated to new systems. The key term here is migration. The insurance industry has been dealing with this complex, intricate topic for years and the pressure to modernise IT platforms will continue to increase. Migration projects are known for being complex, high-risk and costly. Yet with the right strategy, intelligent software solutions and an experienced partner, the challenges can be overcome.

msg.Migration Factory is a comprehensive package of migration solutions for insurers and pension providers. What is truly special is that we also provide the components of the package as individual pieces of software. These include the flexible, ready-to-use migration tool msg.Migration System which can make any migration project efficient and reliable.



● Complete support for the migration process

Migration made easy

The standard software comprehensively supports all key phases of the migration process. msg.Migration System makes it possible to migrate any source system to any target system. It is the central system for collecting, transforming and managing all portfolio and peripheral system data (partners, commission, collection etc.). Although the software is tailored to the specific requirements of the life insurance sector, it can be used for migrations in any other insurance sector as well. Besides data transformation, the msg.Migration System also includes actuarial controlling including the reconciliation of defined test values.

Automated transformation process

msg.Migration System consists of two elements: all data necessary for migration management are collected through the administrative components. Data models are also automatically read as part of the process. Users can rely on the clearly structured, intuitive user interface to enter simple transformation and controlling rules as well as project-specific particularities. The programs of the process components are generated in a next step. Data transformation and controlling can thereby read and write either from databases (DB2, Oracle, PostgreSQL) or from text files in different formats.

Audit-proof and transparent

The logging of all work steps makes the entire migration process transparent and traceable. Additionally, the logs serve as direct evidence of a successful migration for auditors and actuaries. Common test values are already preset. The msg.Migration System has been certified by audit firm KMPG according to IDW PS 880 standards.

Tried-and-tested standard software

As a platform designed for efficient, low-resource migrations, msg.Migration System meets all of the requirements that apply to a modern IT system. The quality of the tool is based on our years of experience with the automation of work processes and the introduction of complex IT systems. msg.Migration System has proven itself in practice: Since 1999, our experts have successfully executed more than 40 migration projects, which include the migration of over 45 million contracts. We are continuously developing the application. Naturally, we always take all legal and statutory requirements and changes into consideration. You can rest assured that the software is always up to date.

● Your benefits ○ at a glance

- Powerful software to support all of the key phases of a migration project

- Test logs as evidence for actuaries and auditors

- Migration of any source system into any target system

- High degree of automation

- Easily expandable by means of templates

- Compatible with all insurance sectors

- Management of the entire migration process

- Audit-proof: Certified under the software certification standard IDW PS 88o

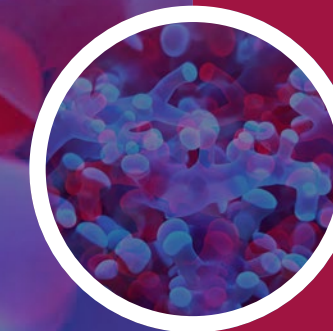
- Traceable and transparent due to the generation of logs throughout the entire migration process

- Minimisation of costs and risks through tried-and-tested standard software

- Ongoing software development

● Reference customers





INSUR:IT
a brand of msg life
and msg nexinsure

msg life ag | Humboldtstraße 35
70771 Leinfelden-Echterdingen
Phone: +49 711 94958-0
Email: contact@msg-life.com
www.msg-insurit.com