

# msg.Migration Archive

Archiving of historical contract data  
and peripheral system data



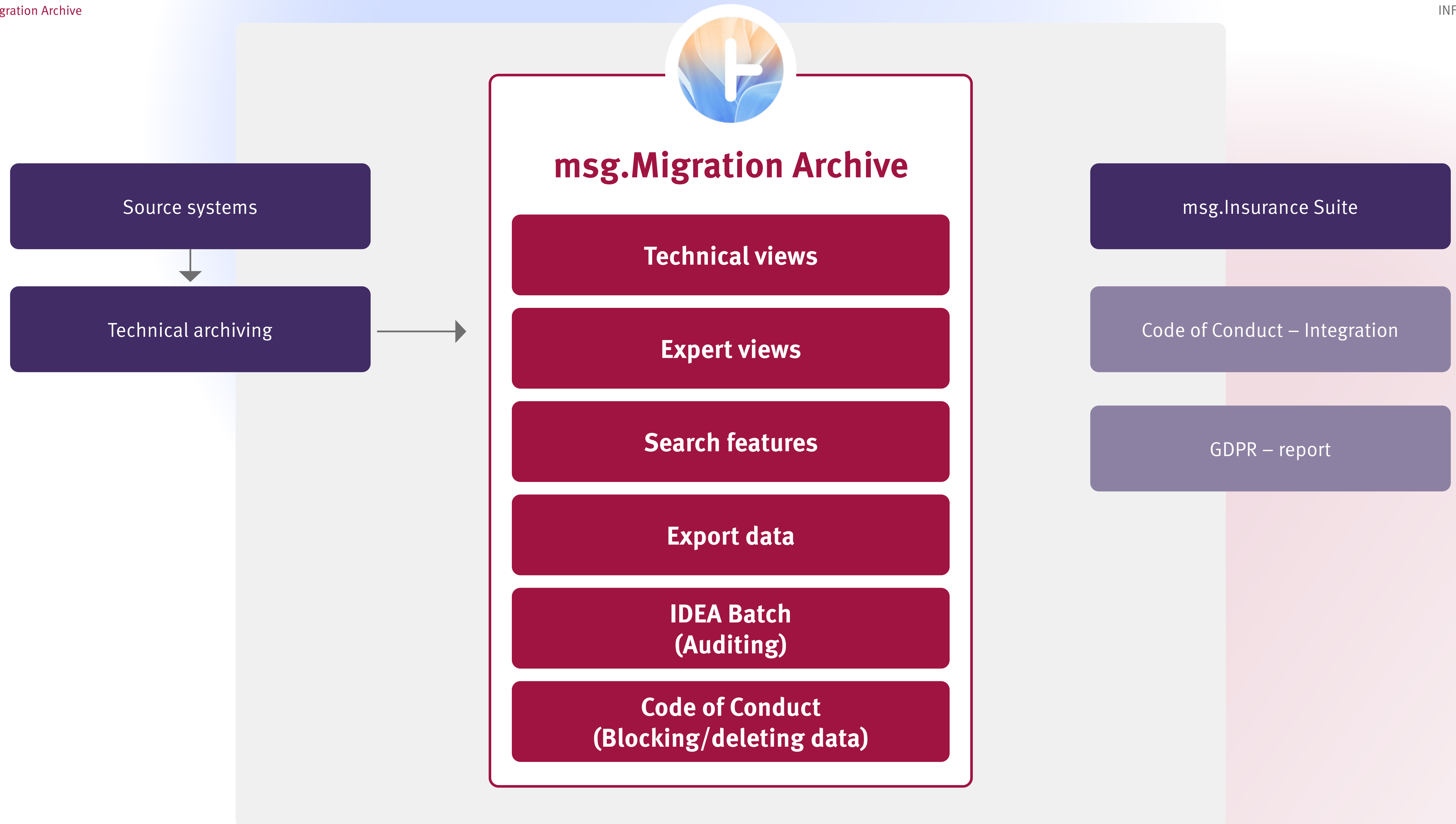


## Archiving of historical contract data and peripheral system data

The insurance industry is going through a phase of disruption. Be it mergers, acquisitions or the introduction of new technology, vast amounts of data and automated business processes always have to be migrated to new systems. The key term here is migration. The insurance industry has been dealing with this complex, intricate topic for years and the pressure to modernise IT platforms will continue to increase. Migration projects are known for being complex, high-risk and costly. Yet with the right strategy, intelligent software solutions and an experienced partner, the challenges can be overcome.

msg.Migration Factory is a comprehensive package of migration solutions for insurers and pension providers. What makes it so special: we also provide the components of the package as individual pieces of software. This includes the archiving and information system msg.Migration Archive. It archives unnecessary historical portfolio and peripheral system data (partners, commission, collection, etc.) efficiently, in a structured manner, across policies and in compliance with the law.







## ● Efficient, low-resource archiving of ○ historical contract data

### **Archive and manage contract data intelligently**

Studies report that, on average, the volume of data in a company gradually doubles within two years. This poses particular challenges in terms of archiving that you can overcome efficiently and cost-effectively with msg.Migration Archive. With the standard software, unlimited quantities of data can be processed and archived; the only limits are set by the hardware and database system. Experience has shown that up to 300 users can access a database over ten terabytes in size. In the current version, around 800 users have access to a joint 50-terabyte database.

### **Convenient research opportunities**

With msg.Migration Archive, data can be displayed in a structured manner on the basis of statutory data protection requirements or storage obligations and periods. The tool is easy to use with its clear user interface. The system comes with a user-friendly information search feature through the entire archive. This means that your case handlers will be able to provide information rapidly. You can use the sophisticated authorisation system to determine who can access what data. The option to link various databases within msg.Migration Archive opens up ways to exchange information that would not have been possible in the source systems.



### Customisation of expert views

msg.Migration Archive also allows the user to define individual expert views for the archived source data. These views run for the runtime and can be modified or expanded at any time with ease. This provides specialist departments with selective technical data aggregation and the opportunity to perform further research in a manner optimised for the business process.

### Full integration

msg.Migration Archive can be used as a stand-alone solution or integrated into msg.Insurance Suite. Additionally, the system runs on various different database platforms. The software prepares data in commonly used export formats, making it possible to process and export them using a browser, word processing or spreadsheet program if necessary. The standard software is compatible with all insurance sectors and all types of historical data.

### Intelligent feature batches

msg.Migration Archive makes it possible to block, unblock and delete archived data via a CoC batch (Code of Conduct batch). The CoC batch can even generate a list of candidates to block and delete.

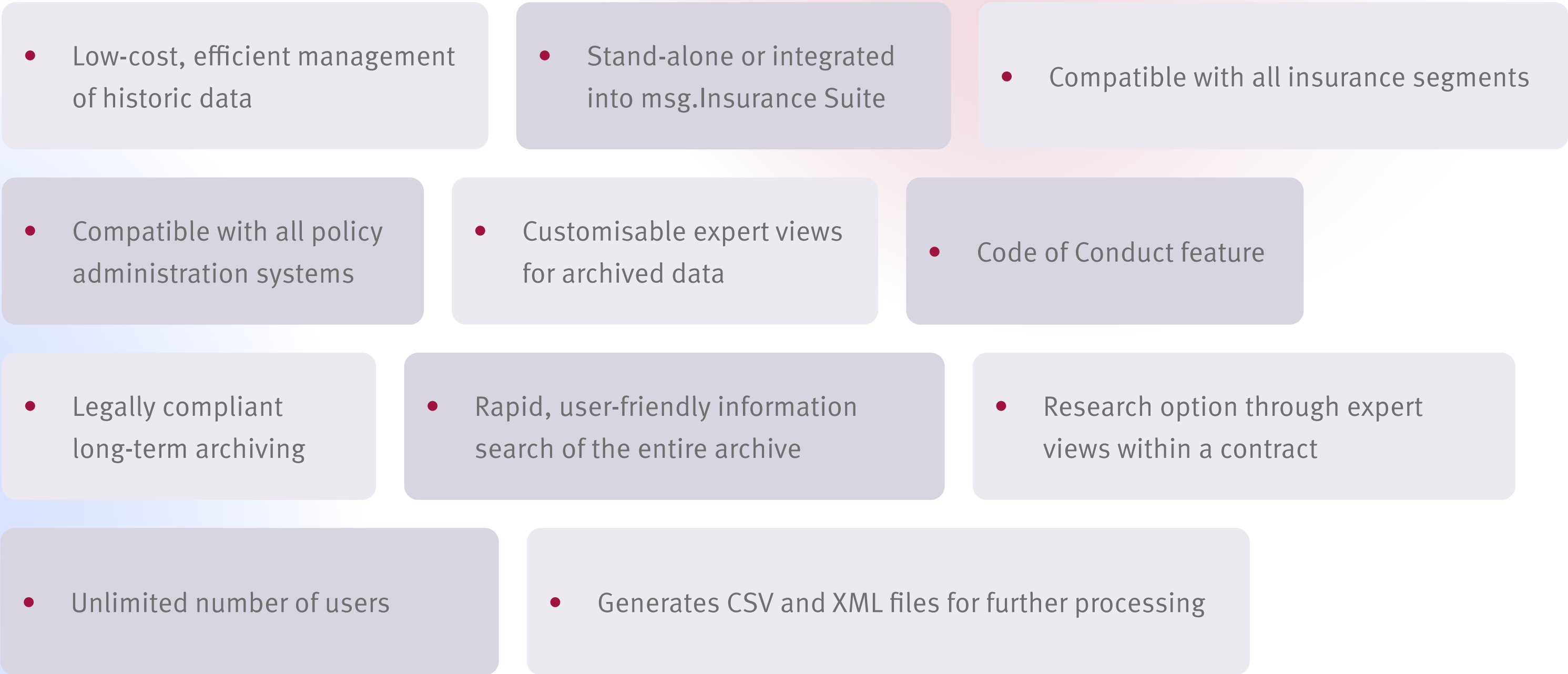
With the IDEA batch, data can be made available to an auditing system.

### Tried-and-tested standard software

As a platform designed for efficient, low-resource archiving, msg.Migration Archive meets all of the requirements that apply to a modern IT system. We are continuously developing the application.



# ● Your benefits ○ at a glance

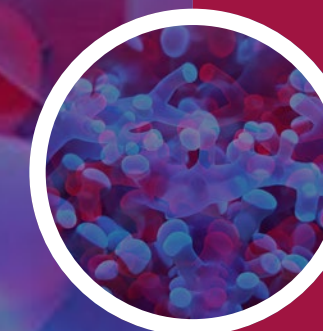




## ● Reference customers ○ (selection)







## **INSUR:IT**

**a brand of msg life  
and msg nexinsure**

msg life ag | Humboldtstraße 35  
70771 Leinfelden-Echterdingen  
Phone: +49 711 94958-0  
Email: [contact@msg-life.com](mailto:contact@msg-life.com)  
[www.msg-insurit.com](http://www.msg-insurit.com)